



# ROTHERHAM DEMENTIA CARER SUPPORT



Is someone you care for experiencing memory loss, forgetfulness, confusion or other effects of dementia?

If yes, we are here to help.



[www.makingspace.co.uk](http://www.makingspace.co.uk)

When a relative, friend or someone you directly care for is experiencing symptoms of dementia, it is good to know that neither you, nor they, have to be alone to meet the challenges ahead.

**We are here to help you live well with dementia.**

## 1-TO-1 SUPPORT

We know that being a carer can be challenging at times, which is why our friendly and compassionate team are with you every step of the way to make sure you receive the best possible support.



## MULTI-LINGUAL SUPPORT

A support worker who speaks Punjabi, Hindi, Urdu and Amirepure can provide dementia carer support by visiting you in your own home or a preferred location of your choice.

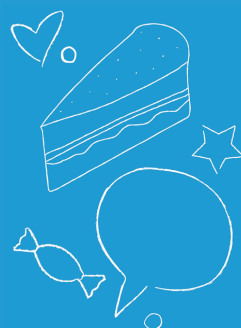
## MUSIC MEMORIES CAFÉS

Our cafés offer yourself, and the person you care for, the chance to meet others in a similar situation in a positive and relaxing atmosphere.

You can meet professionals and other carers and share knowledge with people who have first-hand experience of caring for those living with dementia.

**All our cafés feature live entertainment.**

You can arrive from 1pm onwards to our cafés for support. Our staff are available from 1pm until 4pm, with activities starting from 1:30pm to 3:30pm.



## THURCROFT

Gordon Bennett  
Memorial Hall,  
1 Green Arbour  
Road, S66 9AA  
**1:30pm - 3:30pm**

2024

2nd April  
7th May  
4th June  
2nd July  
6th August

3rd September  
1st October  
5th November  
3rd December

2025

7th January  
4th February  
4th March

## BRAMPTON BIERLOW

Parish Hall,  
Knollbeck Lane,  
S73 0UA  
**1:30pm - 3:30pm**

2024

12th April  
10th May  
14th June  
12th July  
9th August

13th September  
11th October  
8th November  
13th December

2025

10th January  
14th February  
14th March

## DALTON

Dalton Parish Hall,  
Doncaster Road,  
Dalton, S65 3EW  
**1:30pm - 3:30pm**

2024

18th April  
16th May  
20th June  
18th July  
15th August

19th September  
17th October  
21st November

No café in December

2025

16th January  
20th February  
20th March

## MALTBY

The Wesley Centre,  
Blyth Road,  
S66 8JD  
**1:30pm - 3:30pm**

2024

22nd April  
20th May  
24th June  
29th July  
19th August

30th September  
28th October  
25th November

No café in December

2025

27th January  
24th February  
24th March

## BRINSWORTH

Parish Pavilion,  
Field View,  
S60 5DG  
**1:30pm - 3:30pm**

2024

18th September  
16th October  
20th November  
18th December

2025

15th January  
12th February  
19th March


Some dates have had to be changed due to bank holidays and availability. If it's your first time at one of our groups, or you haven't been in a while, please contact us.

## CONTACT US

Get in touch today to find out how we can support you


 01709 910 889

 RotherhamCarers@makingspace.co.uk

 Unit 4 Stone Cross House,  
Doncaster Road, Kirk Sandall,  
Doncaster DN3 1QS

 [www.makingspace.co.uk](http://www.makingspace.co.uk)

 @rotherhamcarers

 @carer\_support



If you would like this leaflet in a different language or format, please contact [marketing@makingspace.co.uk](mailto:marketing@makingspace.co.uk)

### Head Office

Making Space, Lyne House, 46 Allen Street, Warrington, Cheshire, WA2 7JB  
Charity Number: 512907